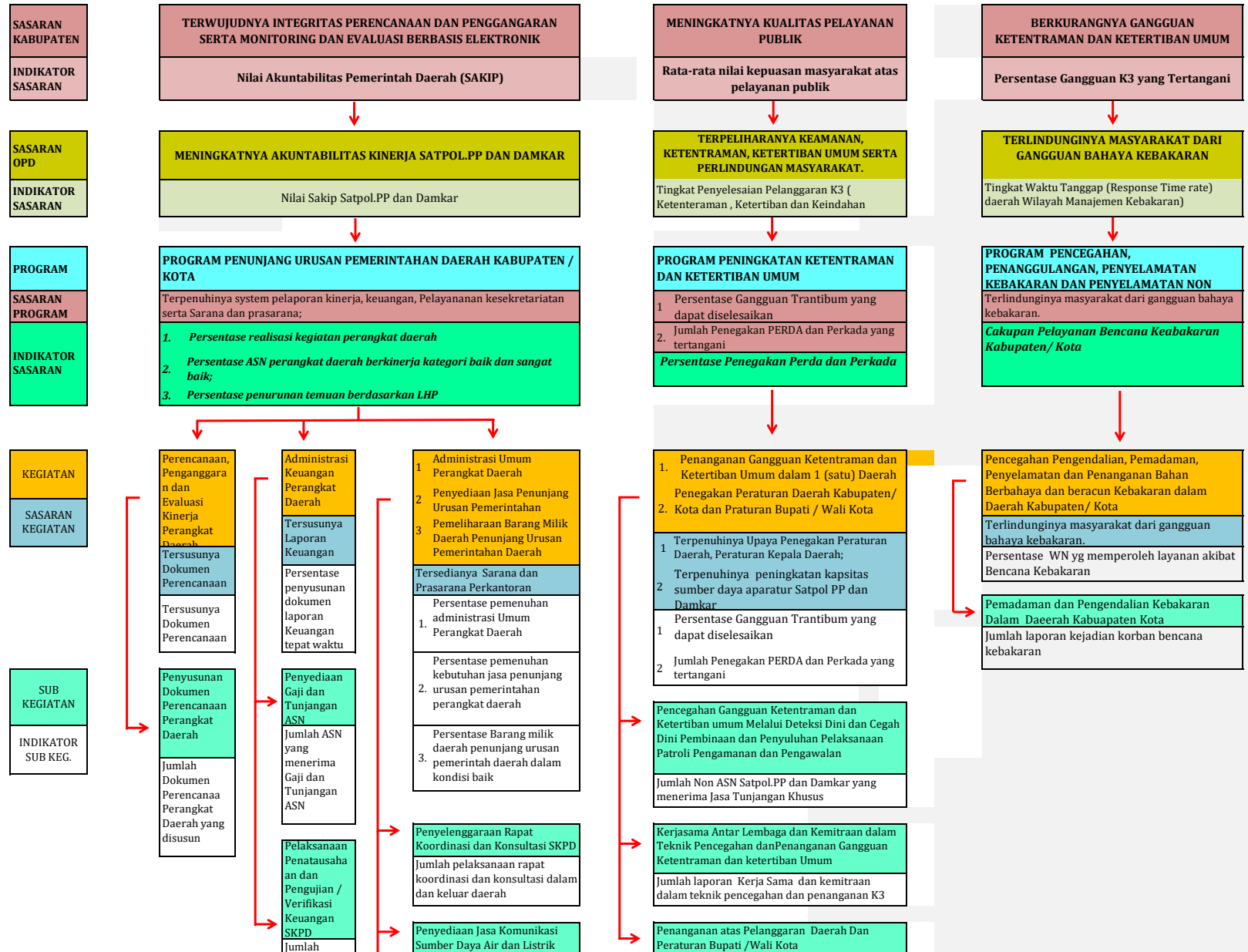


CASCADING KINERJA

SATUAN POLISI PAMONG PRAJA DAN PEMADAM KEBAKARAN KABUPATEN SINJAI



```

graph TD
    A[Laporan Keuangan bulanan SPJ] --> B[Penyediaan Jasa Pelayanan Umum Kantor]
    A --> C[Penyediaan Jasa Pemeliharaan, Biaya Pemeliharaan, Pajak, dan Perizinan Kendaraan Dinas Operasional atau Lapangan]
    A --> D[Jumlah dan jenis kendaraan dinas operasional yang disediakan jasa pemeliharaan dan perizinan]
  
```

The diagram illustrates the breakdown of the monthly SPJ (State Financial Statement) report into three main categories:

- Penyediaan Jasa Pelayanan Umum Kantor** (General Office Services): Includes the amount of non-PNS (Non-Permanent National Civil Servant) provided by insurance premiums.
- Penyediaan Jasa Pemeliharaan, Biaya Pemeliharaan, Pajak, dan Perizinan Kendaraan Dinas Operasional atau Lapangan** (Operational Vehicle Maintenance, Repair, Tax, and Licensing): Includes the amount and type of operational vehicles provided by maintenance services, taxes, and licensing.
- Jumlah dan jenis kendaraan dinas operasional yang disediakan jasa pemeliharaan dan perizinan** (Amount and type of operational vehicles provided by maintenance and licensing): This category is represented by a box with a red border and a red arrow pointing to it from the main flow.

Jumlah warga negara yang terdampak atas penanganan Perda dan Perbub

